



# Sedgwick County Mental Health Hospital (RFP 23-0077)

Request for Proposal  
Architectural and Engineering Services



**PULSE+**  
DESIGN GROUP



**GLMV**Architecture

November 21, 2023

Joe Thomas, NIGP-CPP, CPSM, CPSD, C.P.M.  
Sedgwick County Purchasing Department  
100 North Broadway, Suite 610  
Wichita, Kansas 67202

**RE: Architectural and Engineering Services for Sedgwick County Mental Health Hospital RFP #23-0077**

Mr. Thomas,

Pulse Design Group is pleased to submit our qualifications for the Sedgwick County Mental Health Hospital RFP 23-0077. Pulse Design Group is solely focused on healthcare design, and we are genuinely passionate about transforming the future of healthcare and impacting communities through projects like the proposed Mental Health Hospital in Sedgwick County. Stigmas and lack of resources for mental health have plagued our society for decades, and while we are continually progressing, there is still so much work to do. Congratulations to Sedgwick County, the State of Kansas, and every other institution that works alongside Sedgwick County to address and provide resources to attack this issue from every angle possible. Pulse Design Group appreciates this forward-thinking approach to positively impact our communities.

Pulse Design Group teamed with GLMV Architecture to work alongside Sedgwick County during the Programming and Schematic Design phases for this facility. Our comprehensive design team is highly qualified and best suited to deliver your vision and exceed your expectations.

Pulse Design Group designed the last two mental health hospitals in Kansas, located in Hays and Wichita. In addition, Pulse Design Group is the “on-call” architect for the second-largest state agency, the Kansas Department for Aging and Disability Services, and we understand the State process and expectations.

GLMV Architecture is based in Wichita and has decades of experience working in Wichita and with Sedgwick County officials. This understanding and experience enable our team to provide all stakeholders with a streamlined project approach to provide a Mental Health Hospital to serve Sedgwick County residents and the surrounding community.

We understand the project funding deadline set for year-end 2024. Our team is proud to have met every deadline for the Sedgwick County Mental Health Hospital, and we are ready to “hit the ground running,” enabling Sedgwick County to save time and money. Additionally, our team provides in-house medical equipment planning, allowing us to utilize our extensive experience and resources while delivering comprehensive collaboration.

The team of individuals we have assembled for Sedgwick County are behavioral health design experts, and this is precisely the level of expertise that Sedgwick County and its constituents deserve. We look forward to continuing the design process of this transformational project and are committed to our continued partnership with Sedgwick County. Our sense of urgency is unmatched, and our purpose centers on how behavioral health services are experienced and delivered.

We look forward to the next steps in the process and would be honored to be your partner on this amazing journey of improving lives in Sedgwick County. Please contact Fred or myself at any time for further clarification or discussion.

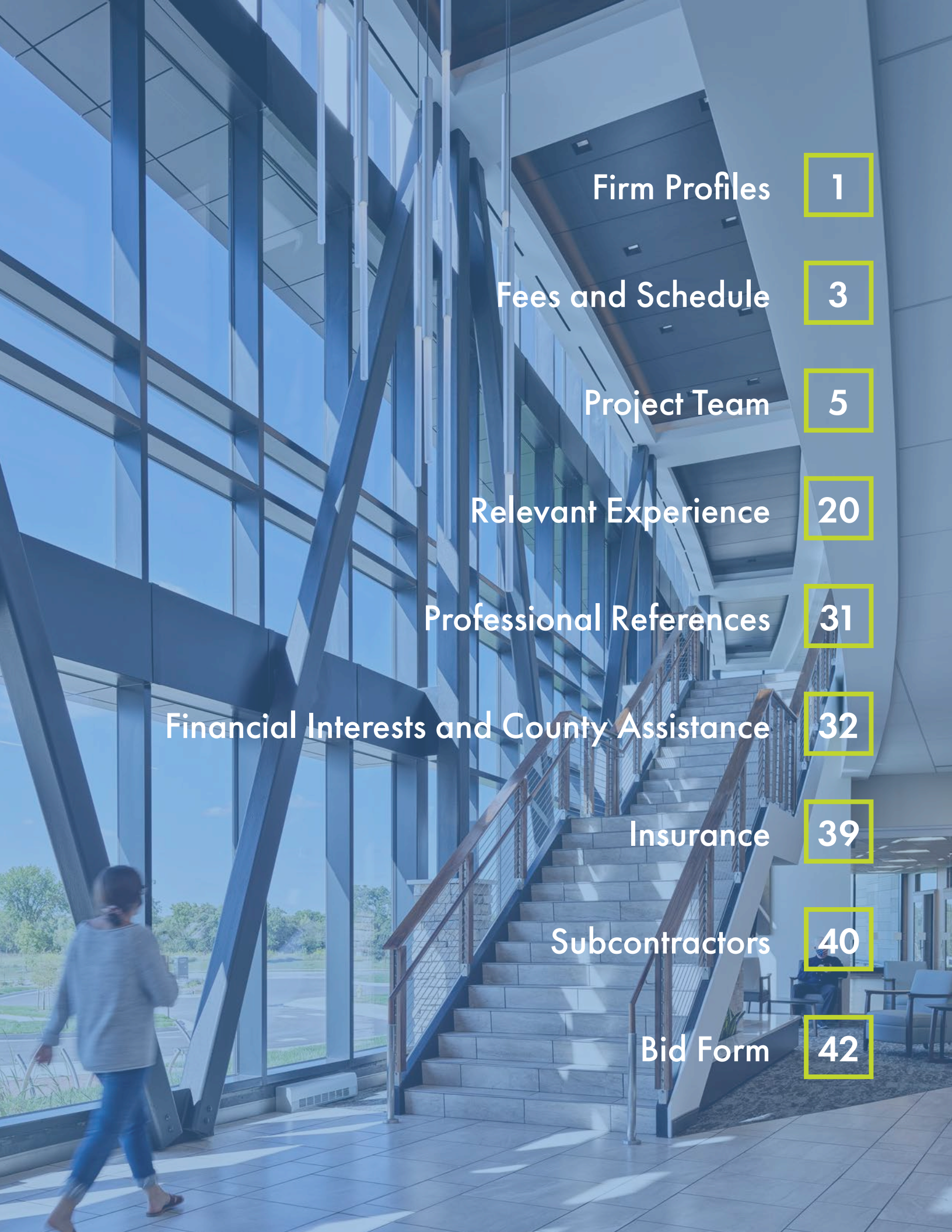
Sincerely,



Basil Sherman II, AIA, ACHA, EDAC, NCARB  
Principal  
Pulse Design Group  
bsherman@pulsedesigngroup.com  
Cell: 913.269.0604



Fred Britain, AIA  
Healthcare Division Leader  
GLMV Architecture  
fred.britain@glmv.com  
Office: 316.265.9367



Firm Profiles

1

Fees and Schedule

3

Project Team

5

Relevant Experience

20

Professional References

31

Financial Interests and County Assistance

32

Insurance

39

Subcontractors

40

Bid Form

42



# Firm Profiles

## FIRM INFORMATION

# Pulse Design Group Architect of Record

# PULSE+

## DESIGN GROUP

### Firm Address

4622 Pennsylvania Avenue, #1050,  
Kansas City, Missouri 64112

### Primary Contact

Basil Sherman II, AIA, ACHA, NCARB, EDAC  
Managing Principal  
Office: 913.438.9095  
bsherman@pulsedesigngroup.com

### Year Established

1980

### Firm Principals/Leadership

Basil Sherman II - Principal  
Michael Andracsek - Principal  
Lindsay Hampton - Principal  
Dennis Burns - President  
Matt Meier - Vice President  
Mary Moore - Vice President  
Kevin Purvis - Assoc. Principal  
Callum Vierthaler - Assoc. Principal  
Michelle Wineinger - Assoc. Principal

### At-A-Glance

- + 100% Healthcare Focused
- + 47 Healthcare Design Experts
- + 4,000+ Projects
- + Zero Claims or Litigation
- + 29 State Licenses
- + Nationally Ranked Healthcare Architecture Firm (Building, Design and Construction)
- + American Institute of Architects (AIA) Emerging Professional Friendly Firm
- + Best Places to Work (Ingrams Magazine)



Pulse Design Group has remained committed to enhancing healthy communities through intentional design since 1980. We are a full-service healthcare design firm specializing in architecture, interior design, master planning, programming, and medical equipment planning. Our team has spent decades researching, planning, and proactively designing spaces that transform healthcare, enhance the patient experience, and improve outcomes. Healthcare design is our sole focus and passion, and we have completed over 4,000 projects with more than 100 healthcare systems nationwide.

Our dedicated team of healthcare design experts understand the complexities, evidence-based methodologies, social and environmental impact, and empathic approach required to augment the human experience through intentional design. Associates bring different backgrounds, experiences, and interests and align through a shared belief in our vision to transform healthcare through intentional design, enabling us to deliver innovative, evidence-based solutions.

Pulse Design Group's commitment to transforming healthcare begins with our carefully aligned partners and our design process grows from an intricate understanding of each client's unique needs. We believe it is vital to understand the community, history, and people the facility serves. We work in tandem with our clients to design healthcare spaces that reflect and support community engagement and wellness. Our team listens and acknowledges the needs of the individuals who will use the facility, resulting in the creation of an environment that exceeds expectations and will stand the test of time.

Pulse Design Group is passionate about transformational healthcare where whole-person wellness is at the heart of the communities we serve.

## FIRM INFORMATION

# GLMV Architecture, Inc. Local Architect



GLMVArchitecture

### Firm Address

1525 E. Douglas Avenue  
Wichita, Kansas 67211

### Primary Contact

Fred Britain, AIA, NCARB  
Healthcare Division Lead  
Office: 316.265.9367  
fred.britain@glmv.com

### Year Established

1919

### Firm Principals/Leadership

Matt Cortez - President  
David Asaud - Vice President  
John Ford - Human Resources Director  
Lori Guthridge - Vice President  
Chris Kliewer - Director of Operations  
Angie Long - Vice President  
Angie Morgan - Vice President KC  
Carmen Onken - Vice President  
Craig Rhodes - Vice President  
Jeff Weiford - Executive Vice President

### Services Offered

- + Architecture
- + Interior Design
- + Planning & Programming
- + Civil Engineering
- + Landscape Architecture
- + Construction Documents
- + Construction Administration
- + Cost Estimating

100%  
EMPLOYEE  
OWNED



As a national architectural design firm and respected industry leader, GLMV offers a long history of transforming challenges into opportunities. With roots dating back to 1919, GLMV Architecture, Inc. is a full-service architectural firm of 160 professionals dedicated to delivering uncompromising planning and design services to clients in specialized markets.

OVER 100 YEARS OF  
INDUSTRY  
EXPERIENCE

EST.  
1919

Our offices in Wichita, Kansas City, and Houston serve clients locally and nationally including Sedgwick County, the Veterans Administration and US HealthVest. The GLMV healthcare division has completed numerous projects ranging from acute care and behavioral health hospitals and clinics to research laboratories.

**GLMV brings years of experience providing services for Behavioral Health Centers across the country. The following is a recent sampling of project experience that is similar in size and scope to Sedgwick County's planned Mental Health Hospital:**

- + South Sound Behavioral Hospital, Lacey, WA
- + Plainfield Behavioral Hospital, Plainfield, IN
- + VA Mental Health Clinic, Topeka, KS
- + South Central Mental Health, Andover, KS
- + DeBaKey Mental Health, Houston, TX



# Fees and Schedule

## FEES AND SCHEDULE

Pulse Design Group has prepared fees associated with three different scenarios for Sedgwick County to consider. These fees are based on our experience leading the Programming and Schematic Design phases for the planned facility, our understanding of the scope of work, and our extensive behavioral health design expertise.

GROUND-UP FACILITY	
Architecture/MEP/FP/Structural/Civil	We propose a fee of 7.0% of estimated Construction Cost. <i>Based on the RFP budget of \$22,498,607.00 the projected fee is \$1,574,902.00</i>
Medical Equipment Planning	0.75% of Construction Cost

50/50 EXISTING BUILDING RENOVATION AND ADDITION	
Architecture/MEP/FP/Structural/Civil	We propose a fee of 7.25% of estimated Construction Cost. <i>Based on the RFP budget of \$22,498,607.00 the projected fee is \$1,631,149.00</i>
Medical Equipment Planning	0.75% of Construction Cost

EXISTING BUILDING RENOVATION	
Architecture/MEP/FP/Structural/Civil	We propose a fee of 7.5% of estimated Construction Cost. <i>Based on the RFP budget of \$22,498,607.00 the projected fee is \$1,687,395.00</i>
Medical Equipment Planning	0.75% of Construction Cost

***Fees are based on the estimated total of construction cost. Final amount will be based on final construction cost.***

*It is assumed that site surveying, soil borings and testing, and Phase I Environmental Assessment is covered by Sedgwick County. The design team can carry these costs and will work with Sedgwick County to get competitive quotes should these services be needed.*







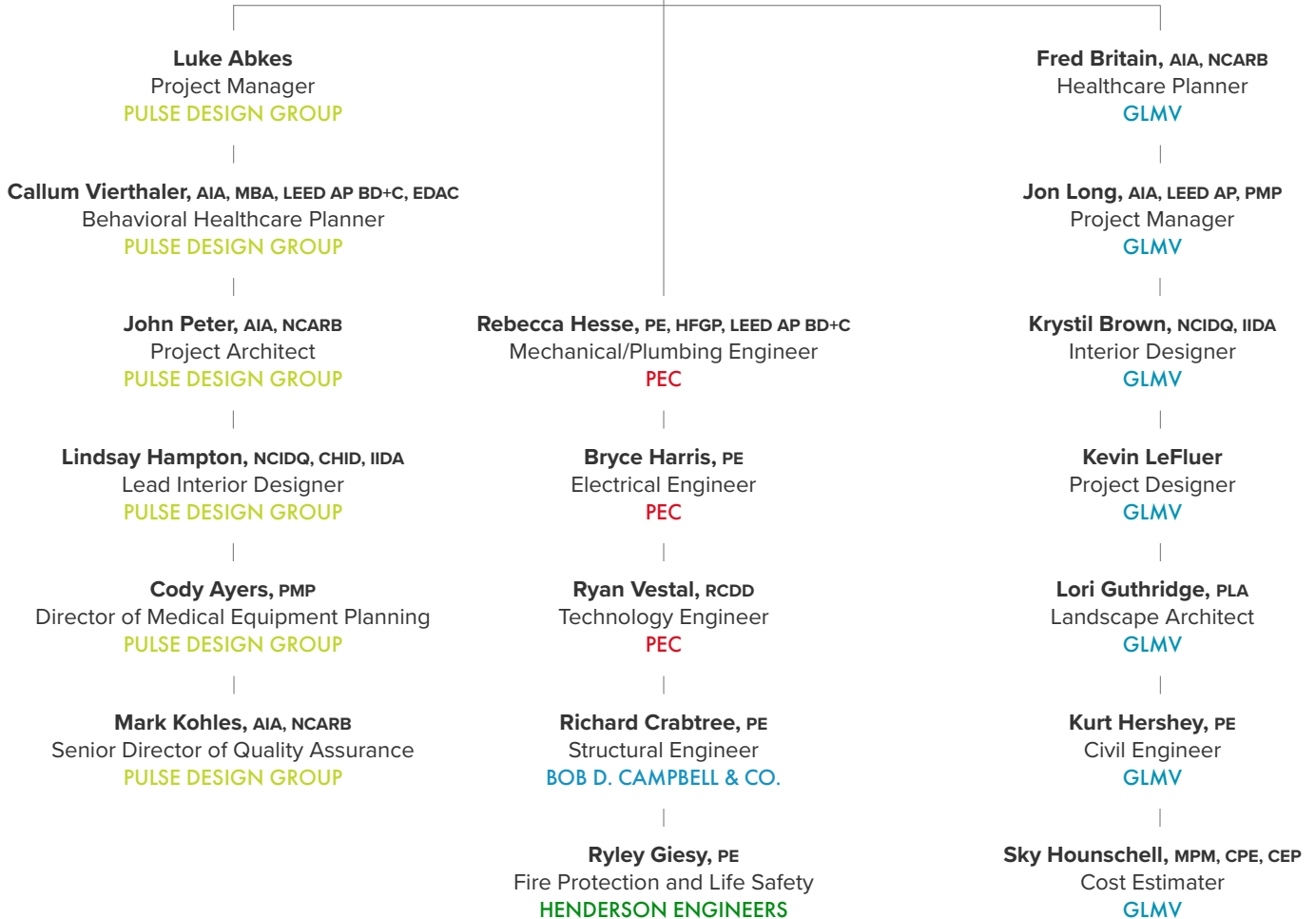
# Project Team

## PROJECT TEAM

Pulse Design Group and GLMV have compiled a diverse project team with extensive experience, specialized certifications and accreditations, behavioral health design expertise, and immense creativity to provide holistic design solutions to ensure the success of the Sedgwick County Mental Health Hospital. We are excited about the opportunity to partner with Sedgwick County to deliver a world-class facility that provides specialized access to care for those most vulnerable in our community. The resumes of all key team members are included on the following pages.



**Basil Sherman II, AIA, ACHA, EDAC, NCARB**  
Principal-In-Charge  
**PULSE DESIGN GROUP**



## PROJECT TEAM

# Basil Sherman II, AIA, ACHA, EDAC, NCARB

PULSE DESIGN GROUP **PRINCIPAL-IN-CHARGE**

Basil's healthcare facility planning and design experience includes diverse facility types, resulting in flexible, functional, and innovative healthcare environments. Basil is well-versed in behavioral health design and applies Lean methodology, extensive research, and evidence-based design best practices to every project. His years of healthcare design expertise, behavioral health experience, specific certifications, and schematic design and programming experience on the planned Mental Health Hospital in Sedgwick County enable him to deliver a creative, cost-effective solution that exemplifies Sedgwick County's vision.

As Principal-In-Charge, Basil will lead the design process, applying technical expertise and compassion to create an optimal healing environment. With extensive experience and a deep understanding of mental health design, he will ensure the facility meets the highest therapeutic and human-centered care standards while being mindful of Sedgwick County's bottom line. Basil has presented at several local and national conferences on behavioral health design best practices.



### Education

Master of Architecture,  
The University of Kansas

### Years of Experience

18 Years

### Certifications + Affiliations

Licensed Architect: AL, AR, AZ, CO, GA, IA, ID, IL, IN, KS, MD, MN, MO, ND, NE, NH, NJ, NY, OH, OK, PA, SC, SD, TX, UT, WI

American Institute of Architects

American College of Healthcare Architects (ACHA)

Evidence Based Design Accreditation and Certification (EDAC)

National Council of Architectural Registration Boards (NCARB)

### The following is a representation of Basil's relevant experience:

- + **Sedgwick County Mental Health Hospital Programming and Schematic Design, Wichita, KS**
- + **Camber Children's Hays Mental Health Hospital, Hays, KS**
- + **Camber Children's Wichita Mental Health Hospital, Wichita, KS**
- + **The University of Kansas Health System Emergency Department Expansion and Crisis Stabilization Unit, Kansas City, KS**
- + **Travis Air Force Base David Grant Medical Center Modernization and Behavioral Health Unit Renovation, Fairfield, CA**
- + **Saint Luke's Hospital of Kansas City Crittenton Children's Center Acute Behavioral Health Unit, Kansas City, MO**
- + **The University of Kansas Health System Strawberry Hill Behavioral Health Hospital Medical Equipment, Kansas City, KS**
- + **Ascension Via Christi 6th Street Outpatient Behavioral Health Clinic, Manhattan, KS**
- + **Saint Luke's Health System North Hospital Behavioral Health Clinic, Smithville, MO**
- + **The University of Kansas Health System Residential Care and Crisis Stabilization Unit, Kansas City, KS**
- + **Camber Children's Mental Health Hospital Upgrades, Kansas City, KS**
- + **Children's Mercy Hospital Integrated Behavioral Health Inpatient Unit, Kansas City, MO**

## PROJECT TEAM

# Luke Abkes

## PULSE DESIGN GROUP PROJECT MANAGER

Luke has a diverse project portfolio that enables him to work on projects of all sizes and scopes. Luke's healthcare design experience and detailed understanding of project management allow him to provide clients with innovative and flexible solutions. He excels in client engagement, evaluating design solutions, and collaborates closely with the entire project team to ensure every aspect of the project is coordinated and cost-effective. Luke is dedicated to revolutionizing the patient experience and creating restorative spaces.

As Project Manager, Luke will be the day-to-day point of contact for Sedgwick County on the Mental Health Hospital project. He will lead the project team and ensure seamless collaboration to deliver Sedgwick County's vision. Additionally, Luke is a member of the National Alliance of Mental Illness (NAMI), a non-profit organization founded by family members of individuals diagnosed with mental illness. His focus and passion for improving access to these critical services further solidify his dedication to delivering a cutting-edge Mental Health Hospital for Sedgwick County.



### Education

Master of Architecture,  
University of Nebraska-Lincoln

Bachelor of Science, Drafting,  
Planning, and Design,  
Wayne State College

Bachelor of Science, Construction  
Management,  
Wayne State College

### Years of Experience

7 Years

### Certifications + Affiliations

Member,  
National Alliance of Mental Illness  
(NAMI)

The following is a representation of Luke's relevant experience:

- + **Sedgwick County Mental Health Hospital Programming and Schematic Design**, Wichita, KS
- + **Children's Mercy Hospital Integrated Behavioral Health Inpatient Unit**, Kansas City, MO
- + **North Kansas City Hospital Ellie Mental Health Clinic Study**, Kansas City, MO
- + **North Kansas City Hospital Ambulatory Surgery Center**, Kansas City, MO
- + **North Kansas City Hospital Command Center**, Kansas City, MO
- + **Sterling Surgical Center**, Germantown, MD
- + **Citizens Memorial Hospital Dialysis Center**, Bolivar, MO
- + **Revolution Surgical Center**, Nashua, NH
- + **Carroll County Memorial Hospital Expansion**, Carrollton, MO\*
- + **Memorial Health Surgical Simulation Center**, Springfield, IL\*
- + **Children's Mercy Hospital Patient Progression Hub**, Kansas City, MO\*
- + **Liberty Hospital Shoal Creek Primary Care**, Liberty, MO\*
- + **Children's Mercy Hospital PICU Remodel**, Kansas City, MO\*
- + **Phelps Memorial Medical Center Medical Office Building Addition**, Holdrege, NE\*
- + **Carehub Coworking Medical Office Building**, Uniontown, PA\*

\*Experience completed prior to employment with Pulse Design Group.

## PROJECT TEAM

# Callum Vierthaler, AIA, MBA, LEED AP BD+C, EDAC

## PULSE DESIGN GROUP BEHAVIORAL HEALTHCARE PLANNER

Callum has 10 years of healthcare design expertise. He has considerable experience as a Behavioral Healthcare Planner and Project Architect on numerous complex projects from preliminary design to completion. Callum is passionate about community wellness and green building solutions and actively promotes people-centered design and sustainability best practices. Callum has presented at several local and national conferences on behavioral health design and emerging architectural technologies.

As Behavioral Healthcare Planner, Callum will collaborate with the entire project team to ensure the design aligns with the therapeutic principles and contributes to the optimal functioning of the mental health hospital.



### Education

Master of Architecture,  
The University of Kansas

Master of Business Administration,  
The University of Kansas

Bachelor of Architecture,  
The University of Minnesota

### Years of Experience

10 Years

### Certifications + Affiliations

Licensed Architect: KS

American Institute of Architects

Evidence Based Design  
Accreditation and  
Certification (EDAC)

LEED AP Building Design +  
Construction (LEED AP BD+C)

AIA Young Architect Award

The University of Kansas  
Architecture and Design Young  
Architect Award

Kansas City Business Journal 20 to  
Know in Architecture Recipient

The following is a representation of Callum's relevant experience:

- + **Camber Children's Hays Mental Health Hospital**, Hays, KS
- + **Camber Children's Wichita Mental Health Hospital**, Wichita, KS
- + **Saint Luke's Hospital of Kansas City Crittenton Children's Center Acute Behavioral Health Unit**, Kansas City, MO
- + **KVC Health Systems Youth Behavioral Health Residential Center**, Kansas City, KS
- + **Saint Luke's Health System North Hospital Behavioral Health Clinic**, Smithville, MO
- + **Camber Children's Kansas City Mental Health Hospital Unit Upgrades**, Kansas City, KS
- + **Midwest Behavioral Health Partner Facility Programming**, MO
- + **Heartland Community Health Center Preliminary Design Study**, Lawrence, KS
- + **Munster Medical Office Building**, Munster, IN
- + **Valparaiso Medical Office Building**, Valparaiso, IN
- + **Nellis Air Force Base Michael O'Callaghan Federal Medical Clinic Realignment**, Nellis AFB, NV
- + **The University of Kansas Health System NICU Unit 55 Renovation and Expansion**, Kansas City, KS
- + **Olathe Health Quivira Campus**, Olathe, KS

## PROJECT TEAM

**John Peter,** AIA, NCARB

PULSE DESIGN GROUP **PROJECT ARCHITECT**

John's extensive healthcare facility planning and experience includes a diverse range of projects for both public and private entities. Through his experience working on technically complex and highly regulated projects, he understands the importance of time-sensitive and cost-effective planning. John is passionate about how architecture impacts the built environment and strives to create spaces where health is at the heart of the community.

As Project Architect, John's experience delivering complex renovations, additions, and ground-up facilities uniquely positions him to design an innovative solution when the project direction has been determined by Sedgwick County. Should Sedgwick County decide on a ground-up facility, John's extensive knowledge of exterior detailing and building envelopes will be critical to ensure that the design is functional and constructible and that the selected materials and building systems are efficient and support the project budget and goals.



### Education

Bachelor of Architecture,  
Kansas State University

### Years of Experience

20 Years

### Certifications + Affiliations

Licensed Architect: KS

American Institute of Architects

National Council of Architectural  
Registration Boards Certified  
(NCARB)

The following is a representation of John's relevant experience:

- + **The University of Kansas Health System Emergency Department Expansion and Crisis Stabilization Unit, Kansas City, KS**
- + **Travis Air Force Base David Grant Behavioral Health Unit Renovation, Fairfield, CA**
- + **Camber Children's Hays Mental Health Hospital, Hays, KS**
- + **Edwards Air Force Base Mental Health Clinic, Kern County, CA**
- + **Travis Air Force Base David Grant Medical Center Modernization, Fairfield, CA**
- + **Nellis Air Force Base Michael O'Callaghan Federal Medical Clinic Realignment, Nellis AFB, NV**
- + **The University of Kansas Health System Indian Creek Campus Expansion, Leawood, KS**
- + **Olathe Health Quivira Campus, Olathe, KS**
- + **Patrick Air Force Base Clinic Modernization, Brevard County, FL**
- + **Langley Air Force Base Dental Clinic Modernization, Hampton, VA**
- + **Kansas Department for Aging and Disability Services Kansas Neurological Institute Tunnel Repair Study, Topeka, KS**
- + **Kansas City Orthopaedic Institute Renovation and Expansion, Leawood, KS**
- + **Fort Leonard Wood Roll Dental Clinic, Fort Leonard Wood, MO**
- + **LMH Health West Campus, Lawrence, KS**

## PROJECT TEAM

# Lindsay Hampton, NCIDQ, CHID, IIDA

PULSE DESIGN GROUP LEAD INTERIOR DESIGNER

Lindsay has 16 years of experience designing healthcare spaces. As Pulse Design Group's first female Principal, Lindsay is known as a trailblazer with keen intuition and a passion for human-centered design. Lindsay's designs balance clinical and regulatory requirements with sensitivity to create uplifting settings for improved therapeutic outcomes. She is a licensed interior designer and a Certified Healthcare Interior Designer (CHID), solidifying her knowledge and dedication to her craft.

As the Lead Interior Designer, Lindsay will leverage her expertise in regulatory standards and empathetic design to create an inspiring Mental Health Hospital for Sedgwick County that supports well-being through intentional space planning, finishes, lighting, furniture, and artwork.



### Education

Bachelor of Science, Interior Design,  
Kansas State University

### Years of Experience

16 Years

### Certifications + Affiliations

NCIDQ Certification,  
National Council for Interior Design  
Qualifications

Certified Healthcare Interior  
Designer (CHID)

American Academy of Healthcare  
Interior Designers (AAHID)

International Interior Design  
Association (IIDA)

The following is a representation of Lindsay's relevant experience:

- + **The University of Kansas Health System Behavioral Health Unit Upgrades**, Kansas City, KS
- + **Children's Mercy Hospital Integrated Behavioral Health Inpatient Unit**, Kansas City, MO
- + **The University of Kansas Health System Residential Care and Crisis Stabilization Unit**, Kansas City, KS
- + **Ascension Via Christi Hospital 6th Street Outpatient Behavioral Health Clinic**, Manhattan, KS
- + **Travis Air Force Base David Grant Behavioral Health Unit Renovation**, Fairfield, CA
- + **The University of Kansas Health System Inpatient Behavioral Health Shower Addition**, Kansas City, KS
- + **The University of Kansas Health System Indian Creek Campus Expansion**, Leawood, KS
- + **Olathe Health Quivira Campus**, Olathe, KS
- + **The University of Kansas Health System Mother Baby Unit 56**, Kansas City, KS
- + **The University of Kansas Health System NICU Unit 55 Renovation and Expansion**, Kansas City, KS
- + **Patrick Air Force Base Clinic Modernization**, Brevard County, FL
- + **LMH Health West Campus**, Lawrence, KS



## PROJECT TEAM

# Cody Ayers, PMP

PULSE DESIGN GROUP **DIRECTOR OF MEDICAL EQUIPMENT PLANNING**

As the Director of Medical Equipment Planning, Cody brings extensive knowledge of healthcare operations, capital improvement projects, and medical equipment technology. His experience working for one of the Midwest's largest healthcare systems and a global medical technology supplier enables him to understand and assist with the most in-depth and complex healthcare projects.

Cody will recommend innovative equipment options and solutions for Sedgwick County to consider and provide project oversight to ensure the team has sufficient resources to deliver the equipment scope of work for Sedgwick County's Mental Health Hospital. Cody is a Certified Program Management Professional (PMP), giving him an in-depth understanding of best practices to ensure successful management of equipment planning, coordination, procurement, budgeting, and installation.



### Education

Bachelor of Science in Finance,  
The University of Kansas

### Years of Experience

10 Years

### Certifications + Affiliations

Project Management Institute  
Certification

The following is a representation of Cody's relevant experience:

- + **The University of Kansas Health System Emergency Department Expansion and Crisis Stabilization Unit**, Kansas City, KS
- + **Children's Mercy Hospital Integrated Behavioral Health Inpatient Unit**, Kansas City, MO, Kansas City, MO
- + **Baptist Health Medical Center Fort Smith Inpatient Behavioral Health Unit Renovation**, Fort Smith, AR
- + **The University of Kansas Health System Strawberry Hill Behavioral Health Hospital Medical Equipment**, Kansas City, KS
- + **Saint Luke's Hospital of Kansas City Crittenton Children's Center Acute Behavioral Health Unit**, Kansas City, MO
- + **Baptist Health Medical Center North Little Rock Inpatient Behavioral Health Unit Renovation**, Little Rock, AR
- + **Treasure Valley Ambulatory Surgery Center**, Meridian, ID
- + **The University of Kansas Health System Cambridge Tower A**, Kansas City, KS
- + **Olathe Health Quivira Campus**, Olathe, KS
- + **The University of Kansas Health System South Medical Pavilion Infusion**, Kansas City, MO
- + **The University of Kansas Health System Executive Clinic**, Kansas City, KS
- + **The University of Kansas Health System Indian Creek Campus Expansion**, Leawood, KS

## PROJECT TEAM

**Mark Kohles,** AIA, NCARB

PULSE DESIGN GROUP **SENIOR DIRECTOR OF QUALITY ASSURANCE**

Mark has 30 years of architectural knowledge and design expertise. He brings a diverse resume based on prompt project delivery through his roles as a Project Manager, Project Architect, and Quality Assurance Director. He leads the firm's Quality Assurance Department and ensures project drawings meet the highest quality standards, exceed client expectations, and support the project vision. Mark's collective knowledge ensures design innovation and accuracy.

Mark ensures design accuracy throughout the project life-cycle at critical project milestones, which results in thorough coordination, detailed drawings, and a significant reduction in RFIs and costly charge orders.



### Education

Bachelor of Architecture,  
The University of Kansas

### Years of Experience

30 Years

### Certifications + Affiliations

Licensed Architect: MO, KS

Member,  
American Institute of Architects

National Council of Architectural  
Registration Boards Certified  
(NCARB)

The following is a representation of Mark's relevant experience:

- + **The University of Kansas Health System Emergency Department Expansion and Crisis Stabilization Unit**, Kansas City, KS
- + **Children's Mercy Hospital Integrated Behavioral Health Inpatient Unit**, Kansas City, MO
- + **Camber Children's Hays Mental Health Hospital**, Hays, KS
- + **Midwest Behavioral Health Partner Facility Programming**, MO
- + **Saint Luke's Hospital of Kansas City Crittenton Children's Center Acute Behavioral Health Unit**, Kansas City, MO
- + **Lake Regional Health System Ambulatory Surgery Center**, Lebanon, MO
- + **Labette Health Hospital Renovation and Expansion**, Parsons, KS
- + **Kansas Department for Aging and Disability Services Kansas Neurological Institute Tunnel Repair Study**, Topeka, KS
- + **City View Ambulatory Surgery Center**, Englewood, NJ
- + **Olathe Health Quivira Campus**, Olathe, KS
- + **Wamego Health Center MRI Addition**, Wamego, KS
- + **Blue Cross Blue Shield of Kansas City Spira Care Clinics**, Multiple Clinics in Missouri
- + **Sterling Surgical Center**, Germantown, MD
- + **Citizens Memorial Hospital Dialysis Center**, Bolivar, MO
- + **Revolution Surgical Center**, Nashua, NH

## PROJECT TEAM

**Fred Britain,** AIA, NCARB

GLMV ARCHITECTURE **HEALTHCARE PLANNER**

Fred brings a rich and varied background to healthcare planning. He oversees projects from design, planning, construction, and project management with the utmost efficiency, and combines different elements from his diverse healthcare project experience to bring a unique approach to each project. He excels at integrating complex medical requirements into the project program to deliver innovative healthcare environments. Fred has successfully delivered numerous behavioral health projects that vary in size and scope and understands the complexities and nuances of behavioral health facility design.

Fred is a Wichita resident and is passionate about delivering a mental health hospital to meet the needs of his community.



### Education

Bachelor of Architecture,  
Kansas State University

### Years of Experience

18 Years

### Certifications + Affiliations

Licensed Architect: KS

American Institute of Architects

National Council of Architectural  
Registration Boards (NCARB)

The following is a representation of Fred's relevant experience:

- + **Sedgwick County Mental Health Hospital Programming and Schematic Design, Wichita, KS**
- + **Avita Reed's Cove Skilled Nursing and Mental Health Inpatient Conversion, Wichita, KS**
- + **South Central Mental Health Clinic, Andover, KS**
- + **Plainfield Behavioral Health Hospital, Plainfield, IN**
- + **Colmery O'Neil VA Behavioral Health, Topeka, KS**
- + **Greenwood Skilled Nursing Facility and Behavioral Health Inpatient/Outpatient Conversion, Olathe, KS**
- + **VA Outpatient Clinic, Rock Hill, SC**
- + **Kansas Spine Hospital MRI Replacement, Wichita, KS**
- + **Plastic Surgery Center, Wichita, KS**
- + **Kansas Heart Hospital CT & Cath Lab Remodel, Wichita, KS**
- + **Wake County VA Outpatient Clinic, Raleigh, NC**
- + **MD Anderson OR Renovations, Houston, TX**
- + **Michael E. DeBakey VA Medical Center Spinal Cord Unit, Houston, TX**
- + **Inpatient Medicine/Surgery Unit Renovation, Muskogee, OK**
- + **Republic County Hospital, Belleville, KS**
- + **Jewell County Hospital EMS Ambulance Garage, Mankato, KS**
- + **Jewell County Hospital, Mankato, KS**
- + **DeBakey VAMC Spinal Cord Injury Unit, Houston, TX**

## PROJECT TEAM

# Jon Long, AIA, LEED AP, PMP

GLMV ARCHITECTURE **PROJECT MANAGER**

Jon understands healthcare design and appreciates the constant innovations and market challenges the industry brings. Through his proven experience working on complex and highly technical medical facilities, Jon has developed the ability to partner with clients from the conceptualization of needs and wants to the completion of construction.

Jon will provide architectural direction and behavioral health facility knowledge. He will collaborate with the entire design team to ensure best practices are incorporated into Sedgwick County's Mental Health Hospital.



### Education

Master of Architecture,  
Texas Tech University

Bachelor of Architecture,  
Texas Tech University

### Years of Experience

17 Years

### Certifications + Affiliations

Licensed Architect: TX

Member,  
American Institute of Architects

Certification,  
Project Management Institute

The following is a representation of Jon's relevant experience:

- + **Plainfield Behavioral Health Hospital**, Plainfield, IN
- + **South Sound Behavioral Health Hospital**, Lacey, WA
- + **Colmery O'Neil VA Behavioral Health**, Topeka, KS
- + **Plastic Surgery Center**, Wichita, KS
- + **Kansas Heart Hospital CT & Cath Lab Remodel**, Wichita, KS
- + **Topkea VA Building 26 Renovation**, Topeka, KS
- + **CS Complex Renovation**, Fort Hood, TX
- + **VA Outpatient Clinic**, Rock Hill, SC
- + **Wake County VA Outpatient Clinic**, Raleigh, NC
- + **Michael E. DeBakey VA Medical Center Spinal Cord Unit**, Houston, TX
- + **Inpatient Medicine/Surgery Unit Renovation**, Muskogee, OK
- + **Ness County Hospital**, Ness City, KS
- + **W. Houston Medical Center Solis Mammography Center**, Houston, TX\*
- + **Texas Oncology/McKesson Specialty Health**, Shenandoah, TX\*
- + **Harris County Flood Control District Facilities Assessment**, Harris County, TX\*
- + **Research Medical Office Building**, San Antonio, TX\*

\*Experience completed prior to employment with GLMV.

## PROJECT TEAM

# Krystil Brown, NCIDQ, IIDA

GLMV ARCHITECTURE **INTERIOR DESIGNER**

Krystil believes in uniquely designing each project for the end user's purpose, passion, and comfort. This helps fuel her love for creating beauty and organization out of chaos and improving lives through design. She has extensive experience working with healthcare clients on many types of facilities.

Krystil will provide expertise in furniture configuration and procurement. She will assist with the development of concepts and selection of interior material options.



### Education

Bachelor of Science, Interior Design,  
Kansas State University

### Years of Experience

28 Years

### Certifications + Affiliations

NCIDQ Certification,  
National Council for Interior Design  
Qualifications

International Interior Design  
Association (IIDA)

The following is a representation of Krystil's relevant experience:

- + **Via Christi Health St. Francis 7th Floor Cancer Institute**, Wichita, KS
- + **Via Christi Health St. Francis 5th Floor Dialysis**, Wichita, KS
- + **Via Christi Health St. Francis 2nd Floor Remodel**, Wichita, KS
- + **Via Christi Health St. Francis Interior Finish Selections, Artwork, and Furniture**, Wichita, KS
- + **Via Christi Health Northeast Cancer Center**, Wichita, KS
- + **Kansas Medical Center**, Andover, KS
- + **Office Remodel and Reconfiguration Wichita Nephrology**, Wichita, KS
- + **Ridgewood Surgery and Endoscopy Center**, Wichita, KS
- + **Assisted Living/Memory Care Facility - Larkfield Place**, Wichita, KS
- + **Catholic Care Center Shepherd's Crossing Renovation**, Bel Aire, KS
- + **VA Outpatient Clinic**, Rock Hill, SC
- + **Wake County VA Outpatient Clinic**, Raleigh, NC
- + **Palacious Medical Clinic**, Palacious, TX

## PROJECT TEAM

# Kevin LaFleur

GLMV ARCHITECTURE **PROJECT DESIGNER**

Kevin is a project designer with well-rounded experience in all phases throughout the project life cycle, from design to construction documentation and construction administration. He provides support to the design team throughout every project. Kevin possesses experience in diverse sectors and is well versed in project requirements and processes. He complements his architectural knowledge with exceptional BIM skills, making him an asset to the team.

Kevin has successfully designed and delivered multiple behavioral health hospitals and will apply lessons learned and best practices for Sedgwick County's Mental Health Hospital.



### Education

Bachelor of Architecture,  
Southern University A&M

### Years of Experience

11 Years

### Certifications + Affiliations

Associate Member,  
American Institute of Architects

The following is a representation of Kevin's relevant experience:

- + **Plainfield Behavioral Health Hospital**, Plainfield, IN
- + **South Sound Behavioral Health Hospital**, Lacey, WA
- + **Silver Oaks Behavioral Health Hospital**, New Lenox, IL
- + **Houston Behavioral Healthcare Hospital**, Houston, TX
- + **KMC Ambulatory Surgery Center**, Andover, KS
- + **VA Outpatient Clinic**, Rock Hill, SC
- + **Wake County VA Outpatient Clinic**, Raleigh, NC
- + **Michael E. DeBakey VA Medical Center Spinal Cord Unit**, Houston, TX
- + **Michael E. DeBakey VA Medical Center Women's Services**, Houston, TX
- + **Michael E. DeBakey VA Medical Center OR Expansion**, Houston, TX
- + **Michael E. DeBakey VA Medical Center VISCOR**, Houston, TX
- + **Michael E. DeBakey VA Medical Center Police Services**, Houston, TX
- + **MD Anderson Cancer Center Main R6.1465 Endocrine**, Houston, TX
- + **MD Anderson Cancer Center Main Sterile Processing Department**, Houston, TX
- + **MD Anderson Cancer Center Main B8.4511 Clinical Expansion**, Houston, TX

\*Experience completed prior to employment with GLMV.

## PROJECT TEAM

# Lori Guthridge, PLA

GLMV ARCHITECTURE **LANDSCAPE ARCHITECT**

Lori has versatile experience in landscape architecture and site planning projects, including landscape planting, irrigation design, and streetscape design development. She is passionate about working with clients to create healing landscape environments. Whether it is a simple strolling garden to reduce stress and anxiety or working with staff to design a therapy garden program, Lori is dedicated to improving the human experience through natural elements.

Lori will be responsible for the landscape and site planning design for Sedgwick County. She will oversee the production of landscape design documents, specifications, and will be involved during construction to confirm the quality of the landscape and irrigation systems. Additionally, she will ensure the landscape construction meets the design intent and expectations of Sedgwick County.



### Education

Bachelor of Architecture,  
Southern University A&M

### Years of Experience

27 Years

### Certifications + Affiliations

Professional Landscape Architect  
(PLA)

Member,  
American Society of Landscape  
Architects

The following is a representation of Lori's relevant experience:

- + **Silver Oaks Behavioral Health Hospital**, New Lenox, IL
- + **Larksfield Place Assisted Living/Memory Care**, Wichita, KS
- + **Wichita Family Crisis Center**, Wichita, KS
- + **Lubbock Heart Hospital**, Lubbock, TX
- + **Catholic Care Center Shepherd's Crossing Renovation**, Bel Aire, KS
- + **Catholic Care Center Shepherd's Unit 3 Remodel**, Bel Aire, KS
- + **VA Outpatient Clinic**, Rock Hill, SC
- + **Wake County VA Outpatient Clinic**, Raleigh, NC
- + **The Cedars Wellness Center**, McPherson, KS
- + **The Cedars Cedar Houses Long-term Care**, McPherson, KS
- + **Phillips Fundamental Learning Center**, Wichita, KS
- + **Kansas Medical Center Ambulatory Surgery Center**, Wichita, KS
- + **Arkansas Medical Center**, Springdale, AR
- + **Ridgewood Surgery and Endoscopy Center**, Wichita, KS
- + **Plastic Surgery Center**, Wichita, KS
- + **Republic County Hospital**, Belleville, KS

## PROJECT TEAM

# Kurt Hershey, PE

GLMV ARCHITECTURE **CIVIL ENGINEER**

Kurt specializes in site development including hydrology/hydraulics, grading, paving, and utilities. With a passion for site development that is accurate and complete, he enjoys initial site reviews to determine the overall design direction.

Kurt believes a complex structure is only successful through a collaborative effort from everyone on the project team. His ability to accurately plot a project course forward and focus on the long-term goals lead to his project's success.



### Education

Bachelor of Architecture,  
Southern University A&M

### Years of Experience

12 Years

### Certifications + Affiliations

Professional Engineer (PE)

The following is a representation of Kurt's relevant experience:

- + **VA Mental Health Clinic**, Topeka, KS
- + **Fundamental Learning Center**, Wichita, KS
- + **VA Outpatient Clinic Rock Hill**, Rock Hill, SC
- + **Wake County VA Outpatient Clinic**, Raleigh, NC
- + **Via Christi Health St. Francis 2nd Floor Remodel**, Wichita, KS
- + **USD 259 Wichita School District Northwest High Drainage Project**, Wichita, KS
- + **Wichita State University Marcus Welcome Center**, Wichita, KS
- + **Viega Site Services**, Wichita, KS
- + **Newman University Sacred Heart Hall**, Wichita, KS
- + **Republic County Hospital Emergency Department Acute Laboratory**, Belleville, KS
- + **Republic County Hospital Addition and Renovation**, Belleville, KS
- + **Bethel College Wellness Center**, North Newton, KS
- + **Metals USA Site Investigation**, Conway Springs, KS
- + **CHS Refinery Paving**, McPherson, KS



## PROJECT TEAM

# Sky Hounsshell, MPM, CPE, CEP

## GLMV ARCHITECTURE COST ESTIMATOR

Sky has over two decades of experience developing cost estimates for projects of all types and sizes, including healthcare projects and behavioral health facilities. Sky will be responsible for keeping project costs on track and alerting the team to any fluctuation regarding material costs.

Sky will support the design team and provide cost insight and guidance to make cost-effective design decisions. He will also provide reviews and feedback for all cost estimates provided by the general contractor to ensure the scope is appropriately covered and costs are accurate. He has successfully estimated behavioral health facilities and monitored costs throughout the project life cycle to ensure his clients receive the best facility at the best price.



### Education

Master of Science in Construction Management,  
University of Missouri - Kansas City

Bachelor of Business Administration,  
University of Missouri - Kansas City

### Years of Experience

27 Years

### Certifications + Affiliations

Master Project Manager (MPM),  
American Academy of Project Management

Certified Professional Estimator (CPE), American Society of Professional Estimators (ASPE)

Certified Estimating Professional (CEP), American Association of Cost Engineers, (AACE)

### The following is a representation of Sky's relevant experience:

- + **Plainfield Behavioral Health Hospital**, Plainfield, IN
- + **South Sound Behavioral Health Hospital**, Lacey, WA
- + **Colmery O'Neil VA Behavioral Health**, Topeka, KS
- + **Behavioral Health Hospital and Mental Health Center**, San Antonio, TX
- + **Avita Reed's Cove Skilled Nursing and Mental Health Inpatient Conversion**, Wichita, KS
- + **Via Christi Village Skilled Care at Ridge**, Wichita, KS
- + **Greenwood Skilled Nursing Facility and Behavioral Health Inpatient/Outpatient Conversion**, Olathe, KS
- + **Daniel M. Carney Rehabilitation Center**, Wichita, KS
- + **Hunter Health Brookside Clinic**, Wichita, KS
- + **The Cedars Cedar Houses Long-term Care**, McPherson, KS
- + **Michael E. DeBakey VA Medical Center Spinal Cord Unit**, Houston, TX
- + **Michael E. DeBakey VA Medical Center Women's Services**, Houston, TX
- + **Michael E. DeBakey VA Medical Center OR Expansion**, Houston, TX
- + **Michael E. DeBakey VA Medical Center VISCOR**, Houston, TX
- + **Inpatient Medicine/Surgery Unit Renovation**, Muskogee, OK



**Relevant Experience**



## Mental Health Hospital Programming + Schematic Design

### SEDGWICK COUNTY

Pulse Design Group and GLMV Architecture joined Sedgwick County in a collaborative effort to develop a program and schematic design for **the planned mental health hospital in Wichita.**

Over various work sessions from September to October 2023, the design team put together three options for the facility based on prospective patient capacity and overall square footage. Three defined options for country consideration are detailed below.

- + **Option 1:** A 111,424 SF facility that can house 104 patients with four forensic units.
- + **Option 2:** A 76,231 SF facility that can house 50 patients with the capacity to support 104 total patients with two forensic units.
- + **Option 3:** A 70,618 SF facility that can house 50 patients and can support 50 patients with two forensic units.

By breaking the proposed facility into three unique options, Sedgwick County has the flexibility to adapt the scope and scale of the project based on available funding and community needs.

**Project Size**  
TBD

**Location**  
Wichita, Kansas

**Project Cost**  
TBD

**Completion Year**  
2023

**Client Reference**  
Joe Thomas, NIGP–CPP, CPSM, CPSD,  
C.P.M.  
Sedgwick County Purchasing  
Department  
joseph.thomas@sedgwick.gov  
316.660.7255

**Architect of Record**  
Pulse Design Group  
GLMV Architecture



# Hays Mental Health Hospital

## CAMBER CHILDREN'S MENTAL HEALTH

The Camber Children's Mental Health project in Hays responded to the critical need for access to pediatric **behavioral health** in rural Kansas. Previously, the project team developed a clinical prototype at the Camber facility in Wichita, Kansas, building on their in-depth understanding of Camber's clinical care practices and workflows, which were incorporated into the Hays facility design. The 27,000 SF project renovated an existing office building into a 32-bed acute inpatient and **psychiatric residential treatment facility**. The flexible design of the units allows immediate patient access to common areas, enhancing patient independence and reducing potential harm to themselves, other patients, and staff.

The project's primary goal was to create a safe space for patients and staff while encouraging healing through uplifting design. Every element in the patient spaces, from wall assemblies, door hinges, glazing, finishes, and furniture, was chosen meticulously for safety and functionality. We incorporated cutting-edge technology and materials to address ligature and shatter resistance in the built environment without compromising the overall look and feel of the design.

The design team also worked with the contractor to fabricate and test assemblies to compare real-world costs and performance, saving the client money and allowing them to focus their budget on the features that mattered most to their patients and staff. The design team incorporated biophilic design, a fundamental design component that utilizes natural elements to positively contribute to human health and productivity. Nature was a focal point of the design through photography, graphic wall protection, and the addition of a large outdoor play area.

### Project Size

27,000 SF

### Location

Hays, Kansas

### Project Cost

\$6.8 Million

### Completion Year

2023

### Client Reference

Bobby Eklofe, MHSA  
 President  
 Camber Children's Mental Health  
 785.505.5000  
 beklofe@cambermh.org

### Architect of Record

Pulse Design Group



# Wichita Mental Health Hospital

## CAMBER CHILDREN’S MENTAL HEALTH

Camber Children’s Mental Health facility in Wichita is a 30,906 SF, 54-bed pediatric **behavioral health hospital** retrofitted from an existing ambulatory surgery center. The project scope involved an initial assessment of the facility for feasibility and infrastructure in addition to the architectural design of the building.

The project team worked closely with user groups to understand operational workflows. These discussions helped establish patient flow through the facility without overlapping staff, admitted patients, and visitors. Utilizing access control and elopement prevention measures, we separated public, staff, and treatment spaces, allowing the owner to invest in safety measures most needed for patients and staff. Our comprehensive approach maximized safety in patient areas, simplified the licensure process for our client, and resulted in a zero-citation Joint Commission walkthrough before the facility’s opening.

We also identified areas for flexible utilization. The consult rooms are an example of this approach, as they were designed to allow for visitation and telehealth and included infrastructure to flex into a future exam room. This methodology helped the design team maximize space efficiency while complying with regulations for behavioral health facilities without increasing project costs.

The thoughtful selection of furniture and finishes evokes a feeling of well-being and comfort throughout the facility. Patient bedrooms and common areas were placed on the exterior of the building to integrate the healing features of nature and invite the warmth of natural light into the spaces.

### Project Size

30,906 SF

### Location

Wichita, Kansas

### Project Cost

\$7.6 Million

### Completion Year

2019

### Client Reference

Bobby Eklofe, MHSA  
President  
Camber Children’s Mental Health  
785.505.5000  
beklofe@cambermh.org

### Architect of Record

Pulse Design Group



# Crittenton Children's Center

## SAINT LUKE'S HEALTH SYSTEM OF KANSAS CITY

Crittenton Children's Center offers mental health services for pediatric patients and provides a safe environment for stabilization and overall well-being. This project modernized the existing 18,500 SF acute patient units to improve patient care and minimize risks to patients and staff.

Pulse Design Group worked with Saint Luke's Health System on the initial assessment to identify specific levels of risk within the five inpatient units and determine objectives that could be met through reconfiguration and/or renovation to meet behavioral health compliance. We used this assessment to collaborate and develop design solutions that brought the facility up to modern **behavioral health** safety standards and regulations while actively treating patients.

The design team reconfigured the space to remove the open, centralized nurse station, improving cross-corridor traffic flow. This allowed the team to design fully enclosed nurse stations to enhance staff safety and ensure direct line-of-site supervision throughout the units and stairwells.

The seclusion rooms, bedrooms, restrooms, and dayrooms were brought up to current FGI standards, including modifications to lighting, flooring, wall bases, furniture, and door hardware. The design team also adapted the units to remove blind spots, added dedicated quiet rooms, and provided general security updates throughout the facility.

**Project Size**  
18,500 SF

**Location**  
Kansas City, Missouri

**Project Cost**  
\$6 Million

**Completion Year**  
TBD

**Client Reference**  
Jeremy Bechtold  
Vice President of Construction Facilities  
and Real Estate  
Saint Luke's Health System  
913.061.3245  
jbechtold@saint-lukes.org

**Architect of Record**  
Pulse Design Group



## ED Expansion and Crisis Stabilization Unit

### THE UNIVERSITY OF KANSAS HEALTH SYSTEM

The Emergency Department Expansion at The University of Kansas Health System consists of a multi-phase addition designed to meet increased patient volume and modernize the environment. The 49,900 SF renovation and expansion spans four floors and includes the addition of 52 emergency treatment rooms, three trauma rooms, and multiple imaging suites. To continue providing exceptional patient care, the project is being constructed in multiple phases to ensure operations are maintained with minimal disruptions to the existing emergency department.

Additionally, The University of Kansas Health System recognized the growing strain on society's mental well-being and the need to provide a separate, safe environment for individuals experiencing mental health distress. This prompted the design of the existing **emergency department psychiatric unit** to evolve and grow, allowing the health system to offer increased services to patients of varying levels of distress. The enlarged unit will include two private seclusion rooms, two treatment rooms, and a group therapy area. The University of Kansas Health System was one of the first to pioneer this concept of care into their existing emergency department operations.

#### Project Size

49,900 SF

#### Location

Kansas City, Kansas

#### Project Cost

\$39 Million

#### Completion Year

February 2024

#### Client Reference

Chris Ruder, MS, RN, NEA-BC  
Chief Operating Officer  
The University of Kansas Health System  
913.588.5153  
cruder@kumc.edu

#### Architect of Record

Pulse Design Group



# Adolescent Mental Health Hospital

## MIDWEST BEHAVIORAL HEALTH PARTNER

Pulse Design Group was selected by a Midwest (confidential) behavioral health provider to develop a new state-of-the-art adolescent **mental health hospital**. An initial program was created after thoroughly understanding the client's needs through weekly collaborative work sessions. The design team outlined four options for client consideration which are detailed below.

- + **Option 1:** Renovation of a 46,274 SF, 52-patient bed adolescent mental health hospital.
- + **Option 2:** Renovation of a 54,547 SF, 65-patient bed adolescent mental health hospital. This option is an expanded version of Option 1 with an additional patient wing.
- + **Option 3:** Renovation of a 60,171 SF, 78-patient bed adolescent mental health hospital. This option is an expanded version of Option 2 with an additional patient wing.
- + **Option 4:** A 60,565 SF, 82-patient bed adolescent behavioral health facility. This option involves a new, ground-up facility that maximizes efficiencies through ideal adjacencies and maintains all services on a single level.

These options served as valuable tools to help the owner visualize different possible programmatic scopes and will support their short and long-term fundraising goals.

**Project Size**  
N/A

**Location**  
Undisclosed

**Project Cost**  
TBD

**Completion Year**  
TBD

**Client Reference**  
Undisclosed Client

**Architect of Record**  
Pulse Design Group





## West Campus

### LMH HEALTH

LMH Health West Campus is a 243,000 SF medical office building. The new campus serves as a catalyst to increase community engagement and improve wellness. The facility offers extended hours for convenient appointments and houses multiple specialties under one roof for same-day appointments. A café, rooftop terrace, walking trail, rotating art gallery featuring local artists, and outdoor workout equipment provide patients, staff, and visitors with refreshing and restorative spaces through increased services and amenities.

The program included a new center for orthopedics, state-of-the-art physical and occupational therapy, imaging, an expanded ambulatory surgery center, women's services, retail pharmacy, primary care, specialty care clinics, urgent care, and associated support services.

During the conceptual design phase, Pulse Design Group brought innovative industry trends to the owner to determine aesthetics that compliment the community, culture, and clinical needs. Inspiration from the local arts council and the surrounding landscape is reflected through the use of art and materials in innovative ways to create a timeless healthcare facility.

At the executive level, the directive was to push the boundaries and create a patient-focused flow with an on-stage/off-stage focus. Pulse Design Group utilized a Lean 3P process and full-scale mock-ups to analyze each clinic's unique layout to arrive at appropriate and efficient solutions.

### Project Size

243,000 SF

### Location

Lawrence, Kansas

### Project Cost

\$79 Million

### Completion Year

2020

### Client Reference

Russ Johnson  
Chief Executive Officer  
LMH Health  
785.505.5000  
russ.johnson@lmh.org

### Architect of Record

Pulse Design Group



# Wake County VA Outpatient Clinic

## THE DEPARTMENT OF VETERANS AFFAIRS

This two story, 245,000 SF facility includes primary care, pharmacy, canteen, radiology, pathology and lab, **psychosocial rehabilitation recovery center**, pulmonary medicine, and speech-language pathology. The design includes provisions for adaptability and flexibility to meet future county and VA needs. The roof deck heights are sufficient to allow reconfiguration of mechanical, fire protection, and electrical systems in the space above ceilings.

The design includes 30,000 SF on the second floor dedicated to **mental health services**. The mental health program supports behavioral health, occupational therapy, homeless services, individual and group therapy, and other critical services for Veterans.

Extensive site work was necessary due to impervious surfacing and slope to make the site functional. Roadway improvements were made to make traffic flow efficiently into the site. The tight site required constant collaboration between the design team and site planners to develop innovative solutions. This included below-grade detention systems and storm-water collection structures, and included 1,300 parking spaces.

Being a design-bid-build delivery, GLMV's cost estimator was involved in each design phase, including the development of schematic budget, design development, and at 30, 60, and 90 percent completion points. Substantial completion is estimated for 2024.

### Project Size

245,000 SF

### Location

Raleigh, North Carolina

### Project Cost

\$200 Million

### Completion Year

2024 (est.)

### Client Reference

Bob Sinclair  
 Director of Operations  
 Atriax, LLC  
 828.315.9962  
 bob.sinclair@atriaxgroup.com

### Architect of Record

GLMV Architecture



# Colmery-O'Neil VA Behavioral Health Modernization

## THE DEPARTMENT OF VETERANS AFFAIRS

Colmery-O'Neil VA hospital is located in Topeka, Kansas, and consolidates **mental health services** from multiple locations across the campus into one central location to provide new and updated functions to serve Veterans.

The multi-phased project includes demolition and renovations to the first floor of Building 2. A new 9,595 SF addition is being constructed on the west side of Building 2 allowing all mental health services to be housed in one central location on campus.

The program includes administration, staff support spaces, med management, homeless services, sexual trauma, suicide support, substance abuse disorder and behavioral health services. Shared services between departments include intake, isolation, group rooms and reception/check in. All mechanical, electrical, plumbing, fire alarm, fire sprinkler and low voltage systems are also being upgraded.

### Project Size

32,407 SF Remodel  
9,595 SF Addition

### Location

Topeka, Kansas

### Project Cost

\$9.9 Million (est.)

### Completion Year

2023 (est.)

### Client Reference

Bob Sinclair  
Director of Operations  
Atriax, LLC  
828.315.9962  
bob.sinclair@atriaxgroup.com

### Architect of Record

GLMV Architecture



# Plainfield Behavioral Health Hospital

## US HEALTHVEST

The Plainfield Behavioral Health Hospital included the design and construction of a new 112-bed **behavioral health hospital** containing 67,600 SF on two floors of equal size, as well as accompanying site improvements. Single-occupant patient rooms and bathrooms were designed for patient privacy and comfort.

Located in each wing of the facility, in addition to patient rooms, are group rooms, quiet activity rooms, a day room, a nurse station and ancillary housekeeping/sterile and sanitation areas. Administrative offices and conference rooms are centrally located on the second floor, allowing the first floor to contain a central, secure lobby/reception area. Emanating from the central lobby are consultation rooms, a series of group rooms, dining room, exercise facility and secure courtyard.

All new patient rooms were designed to the latest standards of behavioral health safety and security requirements for improved overall functionality and observability. The facility was designed and constructed per current national healthcare facility guidelines. These guidelines are consistent with Texas Administrative Code Title 25 Chapter 134 requirements. All components meet or exceed both guidelines and NFPA 101 requirements.

**Project Size**  
67,600 SF

**Location**  
Plainfield, IN

**Project Cost**  
\$18.5 Million

**Completion Year**  
2021

**Client Reference**  
Miro Petrovic, AIA,  
Executive Vice President  
US HealthVest  
212.243.5565  
mpetrovic@ushealthvest.com

**Architect of Record**  
GLMV Architecture



# South Sound Behavioral Health Hospital

## US HEALTHVEST

South Sound Behavioral Health Hospital re-purposed an existing building and modified the facility to meet guidelines concurrent with Texas Administrative Code Title 25 Chapter 134 requirements.

Project scope included the remodel of an existing 68,671 SF, three and four-story building for a 108-bed **behavioral health hospital**. The original project consisted of tenant improvements for US HealthVest. The Building Department requested replacements for all three stairwells and existing elevator because the building was vacant for six years, as well as changes from B-2 to B-1 occupancy.

Additional project scope included refurbished existing dual-pane insulated window units, and mechanical system replacement with a new VRF system, allowing additional energy savings. The existing building structure and materials were utilized and modified to increase loads for new occupancy type and earthquake requirements.

### Project Size

68,671 SF

### Location

Lacey, Washington

### Project Cost

\$26.8 Million

### Completion Year

2019

### Client Reference

Miro Petrovic, AIA,  
Executive Vice President  
US HealthVest  
212.243.5565  
mpetrovic@ushealthvest.com

### Architect of Record

GLMV Architecture



# Professional References

## PROFESSIONAL REFERENCES



**Bobby Eklofe, MHSA**  
President  
Camber Children's Mental Health  
785.505.5000  
beklofe@cambermh.org

*"Pulse Design Group is a great partner to KVC/Camber. Their comprehensive understanding of pediatric behavioral health, attention to detail, responsiveness and budget conscience approach has set the standard for quality care for our system."*



**Chris Ruder, MS, RN, NEA-BC**  
Chief Operating Officer  
The University of Kansas Health System  
913.588.5153  
cruder@kumc.edu

*"Because Pulse Design Group puts the patient first, they are able to design projects that support positive patient outcomes."*



**Catie Smith**  
Director of Planning and Design  
Children's Mercy Hospital  
816.234.3000 (ext. 73996)  
cesmith1@cmh.edu

*"Pulse Design Group is Children's Mercy Hospital's first call when our system requires design solutions in complex healthcare environments. They are trusted partners and we rely on their expertise to advance our mission."*



**Miro Petrovic, AIA**  
Executive Vice President  
US HealthVest  
212.243.5565  
mpetrovic@ushealthvest.com

*"GLMV has become the preferred architect partner, working closely with the client and general contractor to form a solid team. This relationship now extends to multiple facilities throughout the country."*



**Bob Sinclair**  
Director of Operations  
Atriax Group  
828.315.9962  
Bob.Sinclair@atriaxgroup.com

*"We are currently working with GLMV on multiple concurrent projects including the VA Outpatient Clinic in Rock Hill, SC. Their team routinely demonstrates the capacity to meet multiple project deadlines with the necessary skills to meet the client's goals and expectations. I would highly recommend the firm for future work."*



# Financial Interests and County Assistance



# Financial Interests

## SEDGWICK COUNTY AND PULSE DESIGN GROUP

Pulse Design Group has no personal or financial interest in any properties in the project area, or any real or potential conflicts of interest with members of the Sedgwick County Board of County Commissioners or county staff.

# Committed to Success

## SEDGWICK COUNTY SUPPORT



We work alongside our clients and partners in healing to create spaces where health and wellness are at the core of the community. We are passionate about advancing the field of healthcare design and delivering facilities that are focused on whole-person wellness.

Partnership, collaboration, and communication are critical to successful projects and partnerships. By establishing clear communication channels early on, we can ensure alignment and prevent roadblocks down the line. During project kickoff, we will identify the main point(s) of contact from Sedgwick County to streamline information sharing and decision-making, and also for the county to provide relevant background materials and requirements. This will allow the design team to continue to produce comprehensive, accurate plans and documents. We are committed to maintaining open dialogue around decisions, scheduling, and resource needs to keep the project moving forward.



By embracing frequent communication, transparency, and teamwork, we can ensure a smooth process from start to finish. Ongoing cooperation and support from Sedgwick County will be critical to the project's financial viability. Our shared goal is to construct a state-of-the-art Mental Health Hospital that meets county and community needs and **cultivates a healthy, safe, and welcoming environment for Sedgwick County residents.**

# Design With Purpose

## BEHAVIORAL HEALTH DESIGN

Healthcare design is technical and complex and requires sophisticated and intentional solutions. Designing hospitals requires integral knowledge of code compliance, clinical practices, and a dedicated, compassionate design approach. When those spaces are focused on supporting mental health, it is even more crucial because it directly impacts the well-being of individuals. It is not just about how the building looks; it is about creating a safe and supportive healing environment. Every detail must be intentional, from strategic layouts and deliberate color schemes to holistic environments that instill comfort, promote security, and inspire hope.

When planning a hospital, careful consideration must be given to the delivery of materials and supplies, the circulation of staff and patients, and the arrival and interaction of the patients and visitors. These considerations are essential in a mental health hospital, with the enhanced need for constant and security and safety. The addition of the forensics component of this projects makes this proposed facility one of the most complex project types to design and build. Pulse Design Group and GLMV are prepared and excited to bring our expertise to this challenge.

We immerse ourselves in the needs, workflows, and operations of a facility to ensure our design is right for our clients. We will utilize the pre-work that our team has done to hit the ground running. Once we have confirmed the base assumptions from pre-planning, we will apply them to the selected location or building.

We are committed to carefully addressing the project’s safety, security, and healing prerequisites, regardless of the selected site, ensuring thorough attention to detail and comprehensive care. Every site has a solution, and every problem can be solved. Our team will bring our expertise and prior experience with Sedgwick County and the State of Kansas to solve challenges accurately and urgently.

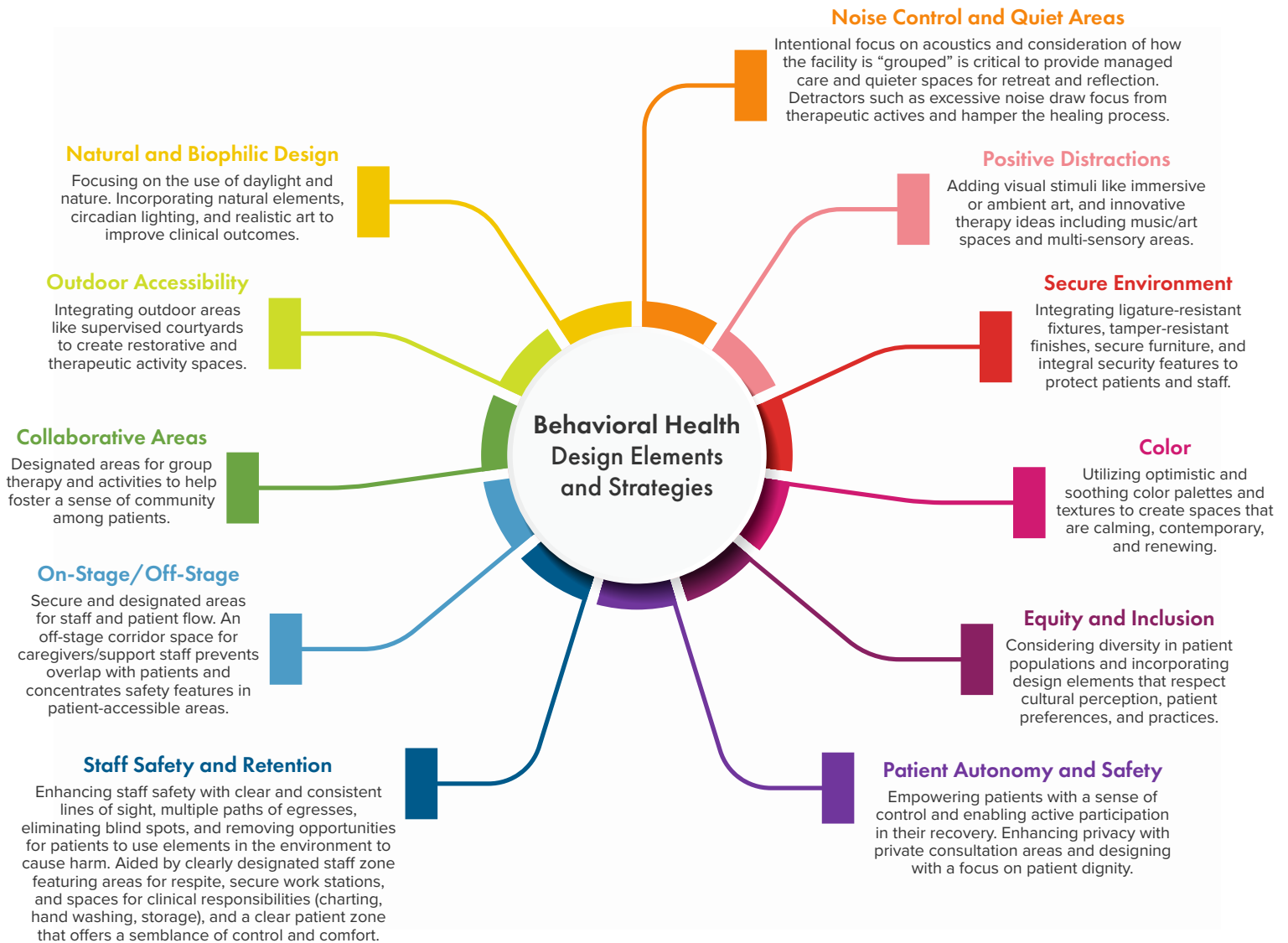
This project will require that our team keep a patient-centered and safety-focused mindset. This is a priority because if we do not ensure patients and staff are secure, they cannot focus on the core function of healing. While safety and security are critical elements of the facility, it is equally essential that the design supports a trauma-informed approach and enables healthy outcomes.



## FINANCIAL INTERESTS + COUNTY ASSISTANCE

Aligning clinical workflows with the facility design is critical to leading-industry healthcare design. Research shows the built environment directly impacts positive outcomes, staff satisfaction, and efficiency. This is especially true for behavioral health facilities, where the environment can cause or enable direct harm to patients. When designed correctly, these spaces can positively affect patient wellbeing and outcomes at a fundamental and psychological level. Due to material and technology advancements, modern behavioral health spaces should feel welcoming, comfortable, and non-institutional to reduce stigmas and anxiety associated with behavioral health treatment.

Behavioral health data, evidence-based design, and Lean methodologies are core to creating positive outcomes. Our team has successfully integrated the elements and strategies displayed in the graphic below into behavioral health environments to achieve positive results.



In addition to these key design elements, the facility must have all of the critical support facilities of a hospital. It must have the core patient rooms and visitor spaces, but it also must include group rooms and areas for staff and patients to interact, which ensure project and patient success.

# Project Approach

## VISIONING

Pulse Design Group begins each project with a discovery and visioning exercise. Once the vision is established, we will work with Sedgwick County to fully assess the needs of the facility, and revisit the program assumptions based on the selected site. This step is crucial to successfully utilizing Lean processes and Evidence Based Design. As part of the programming process, we will evaluate critical adjacencies and building stacking options. Completing these steps will determine an initial project size and a preliminary project budget.

In parallel to this visioning effort, the design team and our consultants will assess the site(s) and building to determine the possibilities and limitations. Once we have this critical information, we will use the concepts created within the programming and visioning exercises to test initial building concepts. Having reached this step in the project, we will work with Sedgwick County and end users to utilize Lean and evidence based innovation. We will develop conceptual floor plans and renderings to fully reflect the owner's vision. This information will also allow us to update the conceptual estimate. Establishing these concepts and front loading the work will set the project up for success and ensure that we all have a solid foundation to move into the next stages of design.

## DESIGN

Once the project scope has been finalized, we will ensure that the design process proceeds in an orderly, efficient fashion. Our design process builds project team consensus through engagement with key client stakeholders and the general contractor in a collaborative, integrated fashion. We promote orderly, linear decision-making by presenting design options and information appropriate for the current stage of design and documenting team decisions in meeting minutes.

Each design phase will consist predominantly of design team work and quality assurance, followed by review of draft design documents with the project team. Each phase will be concluded with a status/issues update to the County. The design team will handle the creation of detailed meeting notes to document and verify decisions made, directions given, and desired design intent. Project notes will be distributed to the entire project team for review, comment, and sign-off.

Pulse Design Group and GLMV will work alongside Sedgwick County to ensure that all appropriate decision-makers are engaged throughout the project and approval sign-off is recorded at each critical project phase, before proceeding to the next. This process ensures comprehensive understanding and buy-in on project solutions being considered. We capture thorough project documentation from concept to completion and ensure owner consensus and buy-in have been established and approved before the project progresses.

Key design phases include the following efforts:

**Schematic Design (SD):** Explore floor plan options with client; develop a final room by room floor plan; identify/confirm client preferences regarding engineered mechanical, plumbing, and electrical systems, fire alarm/sprinkler, and other infrastructure/building systems. We also begin discussions regarding materials, finishes, and major furniture, fixtures and equipment (FF&E).

**Design Development (DD):** Review and finalize all significant project systems and details, including final interior design materials/finishes, casework, engineered mechanical, plumbing, and electrical systems, fire alarm/sprinkler, and other infrastructure/building systems, and FF&E item selection.

**Construction Documents (CD):** The design team generates detailed drawings and specifications from the decisions made during the schematic and design development phases covering all aspects of the project scope.

**Construction Administration (CA):** The Construction Administration phase is the final phase of the design process when construction documents have received permitting approval and the actual construction of the project begins. Pulse Design Group and GLMV are very involved during this phase and work collaboratively with the selected general contractor to ensure that construction mirrors design intent.

## FINANCIAL INTERESTS + COUNTY ASSISTANCE

*\*Bid Packaging: Bid packages will be developed in coordination with the contractor to maximize bidding efficiency. We will identify early bid packages during the preliminary design phase to accelerate the overall project schedule. Examples of potential accelerated bid packages include site preparation/footings and foundations, core and shell, and tenant finish drawings.*

Our team remains nimble and flexible to quickly adapt to the changing requirements of the project, and will ensure project deadlines are met without compromising quality.

## TRANSITION FROM DESIGN TO CONSTRUCTION AND PROJECT CLOSEOUT

We believe continuity throughout the project is critical to our client's vision. As such, we differentiate ourselves from many of our competitors by carrying the same design team members through the construction process. Construction Administration responsibilities include processing general contractor and subcontractor construction submittals, responding to general contractor/subcontractor requests for information (RFIs), issuing architect's supplemental instructions (ASIs), and periodic site visits to inspect construction at key completion points.

Regularly scheduled owner architect/contractor (OAC) meetings will ensure the client remains abreast of all issues affecting project schedule, scope and cost, and initial outfitting of the building with FF&E and ultimately transition to the completed facility.

All project team members will be available for design, planning, code, and documentation questions throughout the duration of the project. We will verify the project goals are met and ensure quality design practices are utilized through project completion.

## EVALUATING AND MANAGING COSTS THROUGH DESIGN

Our team's extensive healthcare experience allows us to anticipate and understand the inherent costs of different products based on the desired quality and life span. Every project has cost constraints, and it is our responsibility to create a design that supports the project budget while portraying the highest level of design excellence. When conscientiously applied, budget control is a critical design tool and an owner's best insurance policy against surprises and unacceptable quality.

We place additional emphasis on the early design phases when opportunities for cost savings are the most significant, as opportunities for cost savings diminish as the design develops. We recognize that the MEP/FP systems can account for 30-40% of the total budget, and an understanding of initial probable costs is critical to effectively analyzing life cycle costs as they relate to first costs. Pulse Design Group and GLMV will work collaboratively with PEC and Henderson Engineers to develop efficient and cost-effective MEP/FP solutions that support and enhance the overall project budget. These variables are considered upfront and throughout the project and will provide Sedgwick County with comprehensive decision-making information.

We utilize a total project cost design approach. This includes identifying the significant project costs at the outset of design and assigning a responsible party for that scope. In addition to design and construction costs, this may include surveys/reports, permits and connection fees, furniture, fixtures and equipment (FF&E), signage and wayfinding, end user transition to the new facility, construction contingencies, etc. We will identify all potential project costs at the outset of design to ensure they are included in the total project budget. Additionally, our design team has in-depth experience with new prefabricated systems, if desired. Whether through a furniture-based system, a modular wall system, or prefabricated MEP systems, these products can reduce cost and time while increasing quality and aesthetics.

Additionally, GLMV employs a full-time, in-house cost estimator, Sky Hounschell, who will monitor project costs and share regular updates with the County. We will rely on Sky's estimating abilities and up-to-date national pricing software systems throughout the project. Early in the design phase, Sky assists in pricing multiple systems and components under evaluation to inform the decision-making process through a life-cycle cost analysis. At later project stages, Sky will provide regular updated detailed take-off cost estimates at major milestones to help ensure the project remains on budget.

Our designs are always produced through the lens of flexibility, durability, detailing, and cost constraints.

## FINANCIAL INTERESTS + COUNTY ASSISTANCE

### QUALITY ASSURANCE

Quality documents rely on an effective quality assurance process. Our quality assurance process begins on day one. We understand the best time to make a design change is early in the design process when a change is expected and appropriate, not at the end of a project when a design change is typically too late and may negatively affect the project budget and schedule. Our in-house quality assurance, code, and BIM experts provide expertise by reviewing and coordinating documents across all team consultants while integrating local and state code requirements to provide a high-quality, well-coordinated set of final drawings and specifications.

This quality assurance process includes cohesive project modeling, weekly model updates, clash detection with resolution, daily “face-to-face” team interaction meetings, and scheduled full-set quality assurance reviews at pre-established milestone dates in all project design phases. All meetings are thoroughly documented with detailed meeting minutes and “Action Item Logs” where open issues are listed and tracked to completion. Our team verifies that the goals, quality expectations, systems integration, and constructability are clearly defined and detailed to ensure the entire team comprehends the complete scope of the project. Our effective quality assurance process results in fewer RFI’s (Request for Information) in the field during construction and drastically reduce design change orders during Construction Administration.

### TECHNOLOGY IN DESIGN

As an innovative healthcare design team, technology is at the forefront of design. We leverage technology to communicate design intent to our clients and consultants through various mediums. Three-dimensional renderings and sophisticated visualization tools allow users of all abilities and levels of design knowledge to understand the project vision.

Our team leverages advanced BIM technologies for real-time coordination, design agility, and stakeholder collaboration. Our designers are versed in Revit, a cutting-edge Autodesk modeling software that enables the design team to quickly and efficiently utilize the latest software advances, make real-time changes as the design progresses, and share the updated models with consultants to overlay MEP systems to ensure proper coordination. We predominately design in Revit, unless another platform (i.e. CADD) is requested by the owner.

### INCLUSIVE DESIGN PRACTICES

The term inclusion is all-encompassing and can be interpreted in a variety of ways, each as important as the next. Our design team takes a holistic approach to inclusion in the design process that begins with building a diverse project team with different backgrounds and perspectives to ensure the design process considers the needs of the population. We are committed to fostering, cultivating, and preserving a culture of diversity, equity, and inclusion within our team. We will engage the community during design to understand diverse users’ needs, incorporate universal design and cultural sensitivity, and use data and metrics to measure outcomes. Inclusive design is a holistic process that requires continuous improvement and attention throughout the design process and life cycle of the building.

# Medical Equipment Planning

## OUR APPROACH

Planning and coordination of medical equipment can be one of the biggest challenges of healthcare design. It requires detailed and accurate coordination of information between equipment vendors, hospital staff, architects, engineers and contractors. Pulse Design Group has an in-house equipment planning department that manages the equipment budget, specifications, purchasing, delivery and setup for all equipment being utilized. Due diligence makes certain that each room is carefully designed and constructed to facilitate the spatial, structural, medical gas and electrical needs of the space.

Pulse Design Group offers a full range of medical equipment planning services from pre-design to project completion. Our goal is to ensure that client needs are met on time and on budget, offering each client the option to choose the equipment procurement vendor, without imposing restrictive vendor exclusivity contracts. Our approach to equipment planning projects is detailed in the following phases outlined below.

### Phase I PROGRAMMING

- Needs analysis and budget preparation
- Review scope of project
- Scheduling of activities based on project timeline
- Existing equipment survey
- Department interviews and equipment programming
- Preparation of equipment budget

### Phase II PLANNING

- Major/Minor equipment specifications development and coordination
- Placement of major/minor equipment in Revit
- Coordination of architectural/engineering data to ensure medical equipment has appropriate power, plumbing, and structural requirements
- Development of equipment plans
- Budget control

### Phase III PROCUREMENT

- Department interface to finalize list and selection of major and minor equipment
- Coordination with users to finalize preferred vendors and makes/models of equipment
- Preparation of composite equipment lists to request pricing from the appropriate vendors
- Purchasing and associated services
- Budget control

### Phase IV INSTALLATION

- Vendor bidding and negotiation
- Updated equipment specifications
- Delivery coordination
- Logistics management of receiving/storage/installation/relocation of all medical equipment
- Budget control
- Produce equipment install schedule based on overall contractor schedule to meet and/or determine go-live date
- Final check of installed equipment



Insurance



**PROOF OF INSURANCE**



**CERTIFICATE OF LIABILITY INSURANCE**

DATE (MM/DD/YYYY)  
11/15/2023

THIS CERTIFICATE IS ISSUED AS A MATTER OF INFORMATION ONLY AND CONFERS NO RIGHTS UPON THE CERTIFICATE HOLDER. THIS CERTIFICATE DOES NOT AFFIRMATIVELY OR NEGATIVELY AMEND, EXTEND OR ALTER THE COVERAGE AFFORDED BY THE POLICIES BELOW. THIS CERTIFICATE OF INSURANCE DOES NOT CONSTITUTE A CONTRACT BETWEEN THE ISSUING INSURER(S), AUTHORIZED REPRESENTATIVE OR PRODUCER, AND THE CERTIFICATE HOLDER.

**IMPORTANT:** If the certificate holder is an ADDITIONAL INSURED, the policy(ies) must have ADDITIONAL INSURED provisions or be endorsed. If SUBROGATION IS WAIVED, subject to the terms and conditions of the policy, certain policies may require an endorsement. A statement on this certificate does not confer rights to the certificate holder in lieu of such endorsement(s).

<b>PRODUCER</b> Holmes Murphy & Associates 2727 Grand Prairie Parkway Waukee IA 50263	<b>CONTACT NAME:</b> Monica Wilks <b>PHONE (A/C, No, Ext):</b> 816-857-7820 <b>E-MAIL ADDRESS:</b> mwilks@holmesmurphy.com	<b>FAX (A/C, No):</b>	
	<b>INSURER(S) AFFORDING COVERAGE</b>		<b>NAIC #</b>
<b>INSURED</b> Pulse Design Group 4622 Pennsylvania Ave., Suite 1050 Kansas City MO 64112	<b>INSURER A :</b> Hartford Underwriters Insurance Company		30104
	<b>INSURER B :</b> Everest National Insurance Company		10120
	<b>INSURER C :</b>		
	<b>INSURER D :</b>		
	<b>INSURER E :</b>		
<b>INSURER F :</b>			

**COVERAGES** **CERTIFICATE NUMBER:** 1569706002 **REVISION NUMBER:**

THIS IS TO CERTIFY THAT THE POLICIES OF INSURANCE LISTED BELOW HAVE BEEN ISSUED TO THE INSURED NAMED ABOVE FOR THE POLICY PERIOD INDICATED. NOTWITHSTANDING ANY REQUIREMENT, TERM OR CONDITION OF ANY CONTRACT OR OTHER DOCUMENT WITH RESPECT TO WHICH THIS CERTIFICATE MAY BE ISSUED OR MAY PERTAIN, THE INSURANCE AFFORDED BY THE POLICIES DESCRIBED HEREIN IS SUBJECT TO ALL THE TERMS, EXCLUSIONS AND CONDITIONS OF SUCH POLICIES. LIMITS SHOWN MAY HAVE BEEN REDUCED BY PAID CLAIMS.

INSR LTR	TYPE OF INSURANCE	ADDL INSD	SUBR WVD	POLICY NUMBER	POLICY EFF (MM/DD/YYYY)	POLICY EXP (MM/DD/YYYY)	LIMITS
A	<input checked="" type="checkbox"/> <b>COMMERCIAL GENERAL LIABILITY</b> <input type="checkbox"/> CLAIMS-MADE <input checked="" type="checkbox"/> OCCUR  GEN'L AGGREGATE LIMIT APPLIES PER: <input type="checkbox"/> POLICY <input checked="" type="checkbox"/> PRO-JECT <input type="checkbox"/> LOC OTHER:			83SBWAK00BH	2/1/2023	2/1/2024	EACH OCCURRENCE \$ 1,000,000 DAMAGE TO RENTED PREMISES (Ea occurrence) \$ 1,000,000 MED EXP (Any one person) \$ 10,000 PERSONAL & ADV INJURY \$ 1,000,000 GENERAL AGGREGATE \$ 2,000,000 PRODUCTS - COMP/OP AGG \$ 2,000,000 OTHER: \$
A	<b>AUTOMOBILE LIABILITY</b> <input type="checkbox"/> ANY AUTO <input type="checkbox"/> OWNED AUTOS ONLY <input type="checkbox"/> SCHEDULED AUTOS <input checked="" type="checkbox"/> HIRED AUTOS ONLY <input checked="" type="checkbox"/> NON-OWNED AUTOS ONLY			83SBWAK00BH	2/1/2023	2/1/2024	COMBINED SINGLE LIMIT (Ea accident) \$ 1,000,000 BODILY INJURY (Per person) \$ BODILY INJURY (Per accident) \$ PROPERTY DAMAGE (Per accident) \$ OTHER: \$
A	<input checked="" type="checkbox"/> <b>UMBRELLA LIAB</b> <input checked="" type="checkbox"/> OCCUR <input type="checkbox"/> EXCESS LIAB <input type="checkbox"/> CLAIMS-MADE DED <input checked="" type="checkbox"/> RETENTION \$ 10,000			83SBWAK00BH	2/1/2023	2/1/2024	EACH OCCURRENCE \$ 5,000,000 AGGREGATE \$ 5,000,000 OTHER: \$
A	<b>WORKERS COMPENSATION AND EMPLOYERS' LIABILITY</b> ANY PROPRIETOR/PARTNER/EXECUTIVE OFFICER/MEMBER EXCLUDED? (Mandatory in NH) If yes, describe under DESCRIPTION OF OPERATIONS below	Y/N	N/A	83WEGAO6760	1/1/2023	1/1/2024	<input checked="" type="checkbox"/> PER STATUTE <input type="checkbox"/> OTH-ER E.L. EACH ACCIDENT \$ 500,000 E.L. DISEASE - EA EMPLOYEE \$ 500,000 E.L. DISEASE - POLICY LIMIT \$ 500,000
B	Professional Liability Claims Made			AAEP000597231	5/11/2023	5/11/2024	Each Claim 5,000,000 Annual Aggregate 5,000,000

DESCRIPTION OF OPERATIONS / LOCATIONS / VEHICLES (ACORD 101, Additional Remarks Schedule, may be attached if more space is required)

<b>CERTIFICATE HOLDER</b>  Insureds Copy	<b>CANCELLATION</b>  SHOULD ANY OF THE ABOVE DESCRIBED POLICIES BE CANCELLED BEFORE THE EXPIRATION DATE THEREOF, NOTICE WILL BE DELIVERED IN ACCORDANCE WITH THE POLICY PROVISIONS.  AUTHORIZED REPRESENTATIVE <i>Kari Coolidge</i>
--	--

ACORD 25 (2016/03) © 1988-2015 ACORD CORPORATION. All rights reserved. The ACORD name and logo are registered marks of ACORD



# Subcontractors

## SUBCONTRACTORS

# Best Value for Sedgwick County

## OUR TEAM

Pulse Design Group has selected a highly qualified and seasoned project team to lead Sedgwick County's Mental Health Hospital. Our team values inclusion and transparency in the design and documentation process, and we approach each project as a collaborative partnership.



### **Pulse Design Group will serve as the Primary Architect for the Mental Health Hospital.**

Pulse Design Group is focused exclusively on healthcare design and has extensive experience in diverse environments and project complexities across the healthcare spectrum. We develop long-term professional relationships with our clients – one capable of guiding them through every aspect of a project. An effective design process starts with listening to and understanding those who will use the facility. It is vital to fully understand the community, history, and patients that each facility serves. The result is the creation of an environment that will not only exceed our client's expectations, but one that is flexible and will stand the test of time. Pulse Design Group is passionate about advancing the field of healthcare design and creating spaces focused on whole-person wellness.

Pulse Design Group and GLMV Architecture have a successful, long-term partnership and have joined together to provide a comprehensive design team for Sedgwick County. Our project team has completed numerous behavioral health projects and understands the intricacies these environments require. Behavioral health facilities require extensive knowledge of the latest code requirements, ligature-resistant design, and patient, visitor, and staff safety. Our team understands how these facilities affect every community member in one way or another, and we strive to provide innovative and efficient design solutions that provide patient-centered care.



**GLMV**Architecture

### **GLMV will be the Local Architect, Civil Engineer, Cost Estimating, and Landscape Architect.**

GLMV has a long-standing relationship and an on-call contract with Sedgwick County, providing architectural services to the County through facility upgrades, renovations, new builds, and studies. Their presence in the heart of Wichita will be of great value to Sedgwick County, enabling them to provide local support within minutes. Pulse Design Group and GLMV are committed to being responsive and available to meet the needs of Sedgwick County. We have a proven track record working together to successfully manage highly complex, concurrent projects under accelerated timelines and budgets.



### **Professional Engineering Consultants (PEC) is the selected MEP engineering consultant.**

Pulse Design Group has partnered with PEC on the last two Mental Health Hospitals in Kansas. Their local presence, community understanding, knowledge of healthcare engineering, and behavioral health expertise position them as subject matter experts for Sedgwick County's Mental Health Hospital. PEC provides holistic solutions to its clients. Headquartered in Wichita, Kansas PEC has offices spanning Kansas, Missouri, Oklahoma, and Colorado, and they employ more than 350 team members who collectively hold engineering licenses in all 50 states.

## SUBCONTRACTORS



### **Bob D. Campbell and Company will provide Structural Engineering.**

Bob D. Campbell and Co. is an independent structural engineering firm well known by the architectural community for its creative solutions to design challenges, while remaining practical in design and responsive to construction difficulties. Since 1957, they have completed a variety of projects in hospitals and healthcare facilities, parking structures, retail, education, civic and community centers, warehouse and manufacturing facilities and sports facilities throughout the United States.

Pulse Design Group has a long, trusted history with Bob. D Campbell and Company spanning our 40-year history, and we rely on their expertise for complex structural engineering solutions.



### **Henderson Engineers will be the Life Safety Consultant.**

Henderson Engineers is a national full-service building systems design firm. They have been designing within the healthcare industry for 25 years, providing expertise across 43 states. Henderson Engineers understands that every facility and project is different, and they approach each project with a concerted focus on what makes it unique. At the core of every project, they work with integrity, intelligence, and care. Henderson Engineers has extensive healthcare facility code, life safety, and fire protection experience.

When it comes to life safety and fire protection, Pulse Design Group views Henderson Engineers as the expert, and we have completed thousands of projects with their team. Their integral understanding of healthcare code compliance and regulatory requirements is paramount and will perform a critical function in the design.

**Sedgwick County and the State of Kansas’s perspectives, experiences, knowledge, and direction are vital to our team’s success in creating your vision. We have demonstrated this critical need and understanding through the programming and schematic design process for the Mental Health Hospital in Sedgwick County. We believe exceptional healthcare facilities emerge when every team member is united by a shared purpose. We are devoted to creating healing environments that serve the community, implement cutting-edge care, prioritize safety, and empower patients on their recovery journey. By combining our expertise, experience, and passion, we can build facilities that provide compassionate support and restore hope.**



# Bid Form

IX. Response Form

REQUEST FOR PROPOSAL  
RFP #23-0077

ARCHITECTURAL AND ENGINEERING SERVICES FOR THE MENTAL HEALTH HOSPITAL

The undersigned, on behalf of the proposer, certifies that: (1) this offer is made without previous understanding, agreement or connection with any person, firm, or corporation submitting a proposal on the same project; (2) is in all respects fair and without collusion or fraud; (3) the person whose signature appears below is legally empowered to bind the firm in whose name the proposer is entered; (4) they have read the complete Request for Proposal and understands all provisions; (5) if accepted by the county, this proposal is guaranteed as written and amended and will be implemented as stated; and (6) mistakes in writing of the submitted proposal will be their responsibility.

NAME Pulse Design Group, Inc

DBA/SAME Pulse Design Group

CONTACT Basil Sherman II, AIA, ACHA, EDAC, NCARB

ADDRESS 4622 Pennsylvania Avenue, Suite 1050 CITY/STATE Kansas City, MO ZIP 64112

PHONE 913.438.9095 FAX 913.438.2660 HOURS 8 AM-5 PM Monday-Friday

STATE OF INCORPORATION or ORGANIZATION Missouri

COMPANY WEBSITE ADDRESS www.pulsedesigngroup.com EMAIL bsherman@pulsedesigngroup.com

NUMBER OF LOCATIONS 1 NUMBER OF PERSONS EMPLOYED 47

TYPE OF ORGANIZATION: Public Corporation \_\_\_\_\_ Private Corporation \_\_\_\_\_ Sole Proprietorship \_\_\_\_\_

Partnership \_\_\_\_\_ Other (Describe): S Corporation

BUSINESS MODEL: Small Business \_\_\_\_\_ Manufacturer \_\_\_\_\_ Distributor \_\_\_\_\_ Retail \_\_\_\_\_

Dealer \_\_\_\_\_ Other (Describe): Professional Services

Not a Minority-Owned Business:  Minority-Owned Business: \_\_\_\_\_ (Specify Below)

\_\_\_\_ African American (05) \_\_\_\_\_ Asian Pacific (10) \_\_\_\_\_ Subcontinent Asian (15) \_\_\_\_\_ Hispanic (20)

\_\_\_\_ Native American (25) \_\_\_\_\_ Other (30) - Please specify \_\_\_\_\_

Not a Woman-Owned Business:  Woman-Owned Business: \_\_\_\_\_ (Specify Below)

\_\_\_\_ Not Minority -Woman Owned (50) \_\_\_\_\_ African American-Woman Owned (55) \_\_\_\_\_ Asian Pacific-Woman Owned (60)

\_\_\_\_ Subcontinent Asian-Woman Owned (65) \_\_\_\_\_ Hispanic Woman Owned (70) \_\_\_\_\_ Native American-Woman Owned (75)

\_\_\_\_ Other – Woman Owned (80) – Please specify \_\_\_\_\_

ARE YOU REGISTERED TO DO BUSINESS IN THE STATE OF KS:  Yes \_\_\_\_\_ No

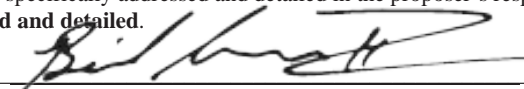
UEI (UNIQUE ENTITY IDENTIFIER) NO. MK57L74EPCS2

INSURANCE REGISTERED IN THE STATE OF KS WITH MINIMUM BEST RATING OF A-VIII:  Yes \_\_\_\_\_ No

ACKNOWLEDGE RECEIPT OF ADDENDA: All addendum(s) are posted to our RFB/RFP web page and it is the vendor's responsibility to check and confirm all addendum(s) related to this document by going to [www.sedgwickcounty.org/finance/purchasing.asp](http://www.sedgwickcounty.org/finance/purchasing.asp).

NO. 1, DATED 11/14/2023; NO. 2, DATED 11/15/2023; NO. \_\_\_\_\_, DATED \_\_\_\_\_

In submitting a proposal, vendor acknowledges all requirements, terms, conditions, and sections of this document. Proposal submission format should be by order in which sections are listed throughout the document. All minimum and general requirements should be specifically addressed and detailed in the proposer's response. **Exceptions to any part of this document should be clearly delineated and detailed.**

Signature  Title Principal-in-Charge

Print Name Basil Sherman II Dated 11/21/2023